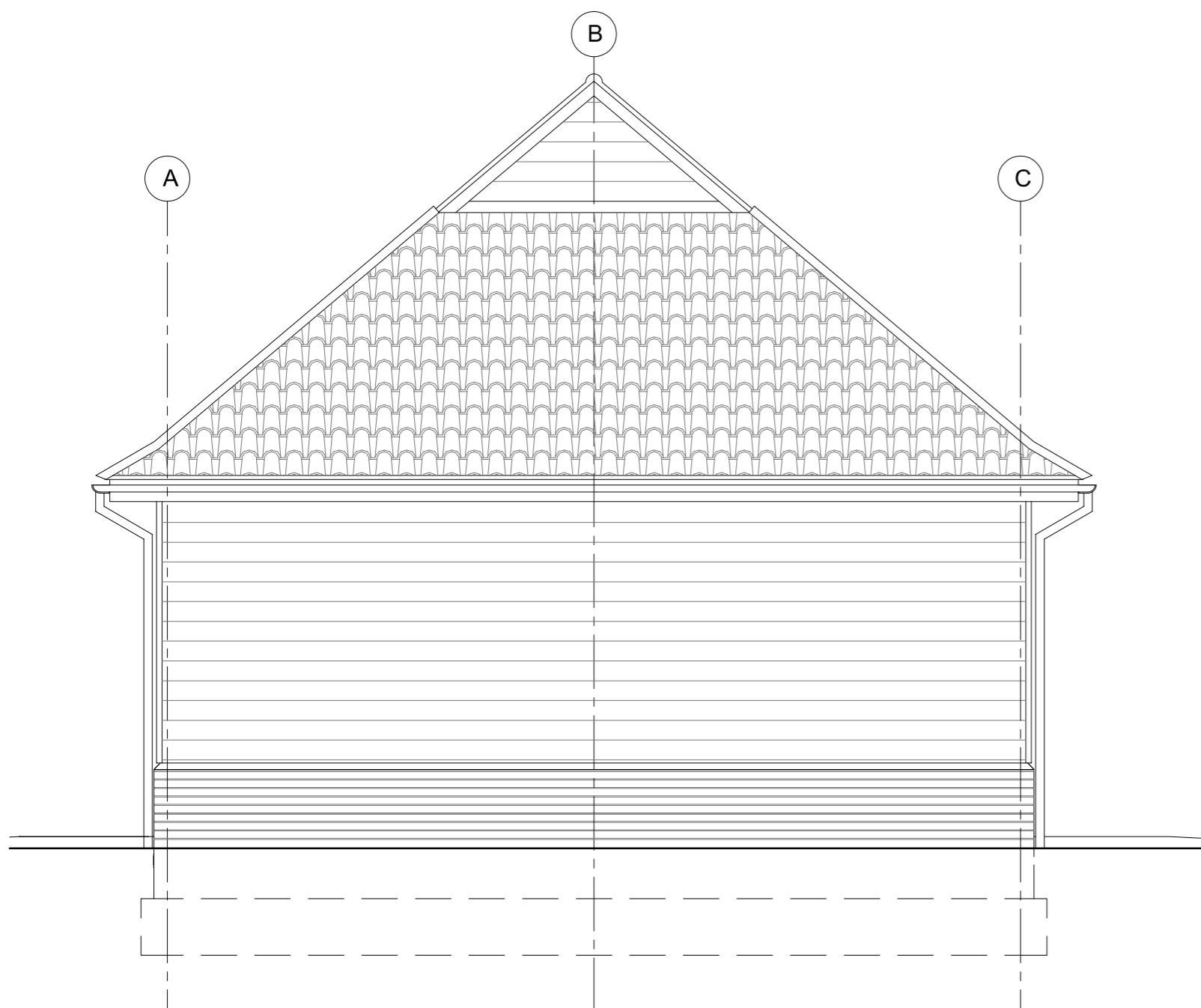
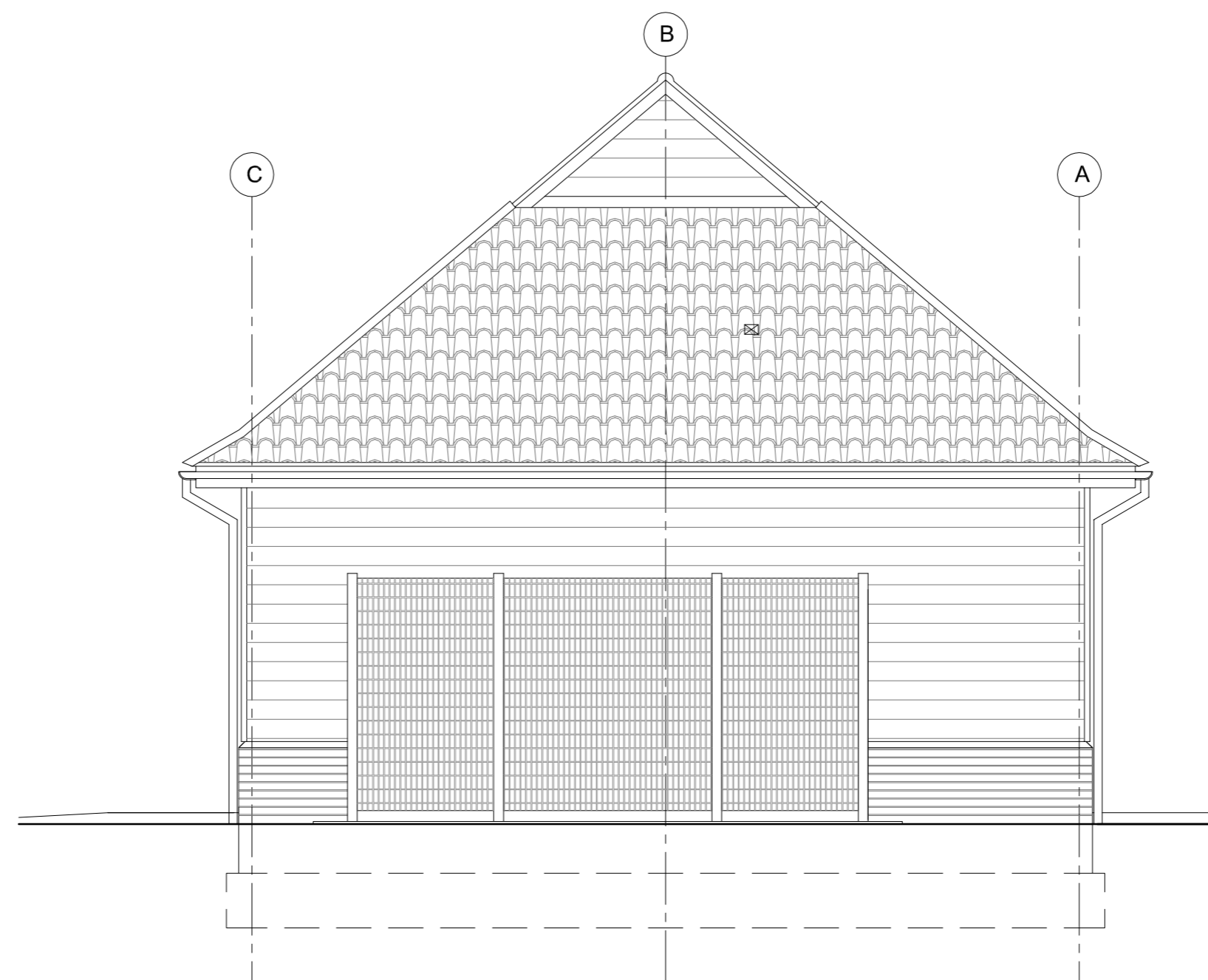


South (Front) Elevation



East Elevation



West Elevation

Rainwater Goods:

Cast Iron Deep Half Round Gutters (125x75mm) laid to falls with 75mm dia. CI downpipes discharging to gully via rw shoes.

Water Heating:

LPG Gas fired Combi Boiler to be SEDBUK 'A' class, located where shown with balanced flue protected where passing through timber structure.

Space Heating:

Shop
To be air conditioning system as designed and detailed by specialist heating engineer. The design of the system is to be reasonably efficient and to comply with the carbon intensity requirements as set out in Approved Document Part L2.

Kitchen, WC and Office
Low surface temperature radiators fitted with thermostatic radiator valves.

Rev	Date	Description
A	Jan 08	Building Regulations submission

**Farm Shop, Wheldons Fruit Farms,
Joes Road, Little Cornard**

Scale	1:50	Size	A2	Title	Elevations
Drawing No.	A169 B04 A	Date	November 2007		

DLDesign Services
10 Gowers End
Glemsford, Sudbury
Suffolk CO10 7UF
www.dldesignservices.net
Tel. No. 07967 611105
Email. dlds@dl-designservices.net

This Drawing is Copyright DO NOT SCALE Verify all information on site